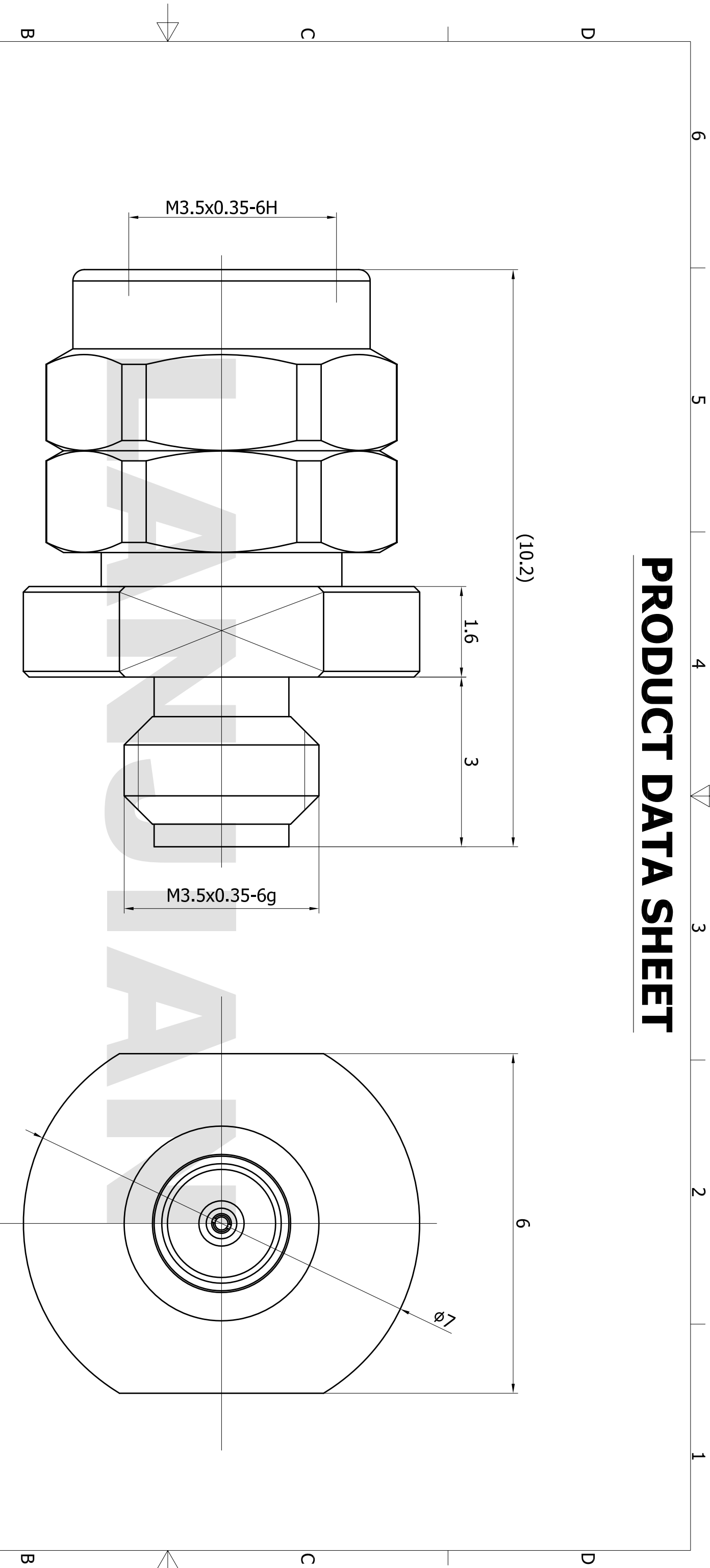


PRODUCT DATA SHEET



MATERIAL:
BODY: STAINLESS STEEL
CONTACT: BERYLLIUM COPPER
INSULATOR: PEI

PERFORMANCE:
IMPEDANCE: 50 OHMS
FREQUENCY: DC TO 145 GHZ
VSWR: ≤ 1.6

THIS DOCUMENT CONTAINS CONFIDENTIAL AND PROPRIETARY INFORMATION THAT CANNOT BE REPRODUCED OR DIVULGED, IN WHOLE OR IN PART, WITHOUT WRITTEN AUTHORIZATION FROM "LANJIAN ELECTRONICS"

MATERIAL : UNLESS OTHERWISE SPECIFIED: DIMENSIONS IN MM		NAME		DATE		SIGNATURE	
TOLERANCES :		X.X		±0.20		ANGULAR : ±1°	
X.XX		±0.10		FILLETS R/C : ±0.10		DEBURR AND BREAK SHARP EDGES	
X.XXX		±0.01		SURFACE FINISH : Ra 1.6			
DRAWN	X.C.W	08/07/2020					
CHK'D	H.Z.Y	08/07/2020					
APP'VD	Q.L	08/07/2020					
MFG							
PROJECTION		SIZE	A3	SCALE	10:1		

LANJIAN ELECTRONICS
38 Hengtong Road, Xinqu Dingmao
Zhenjiang, 212009, Jiangsu, P. R. China

TITLE
0.8MM-JK

DWG No. GCPZ3.640.AE.002

DO NOT SCALE THE DRAWING

REV. A
PAGE 1 / 1