

MATERIAL:
 BODY: STAINLESS STEEL
 CONTACT: BERYLLIUM COPPER
 INSULATOR: NORYL/PTFE

PERFORMANCE:
 IMPEDANCE: 50 OHMS
 FREQUENCY: DC TO 18GHZ
 VSWR: ≤1.20

THIS DOCUMENT CONTAINS CONFIDENTIAL AND PROPRIETARY INFORMATION THAT CANNOT BE REPRODUCED OR DIVULGED, IN WHOLE OR IN PART, WITHOUT WRITTEN AUTHORIZATION FROM "LANJIAN ELECTRONICS"

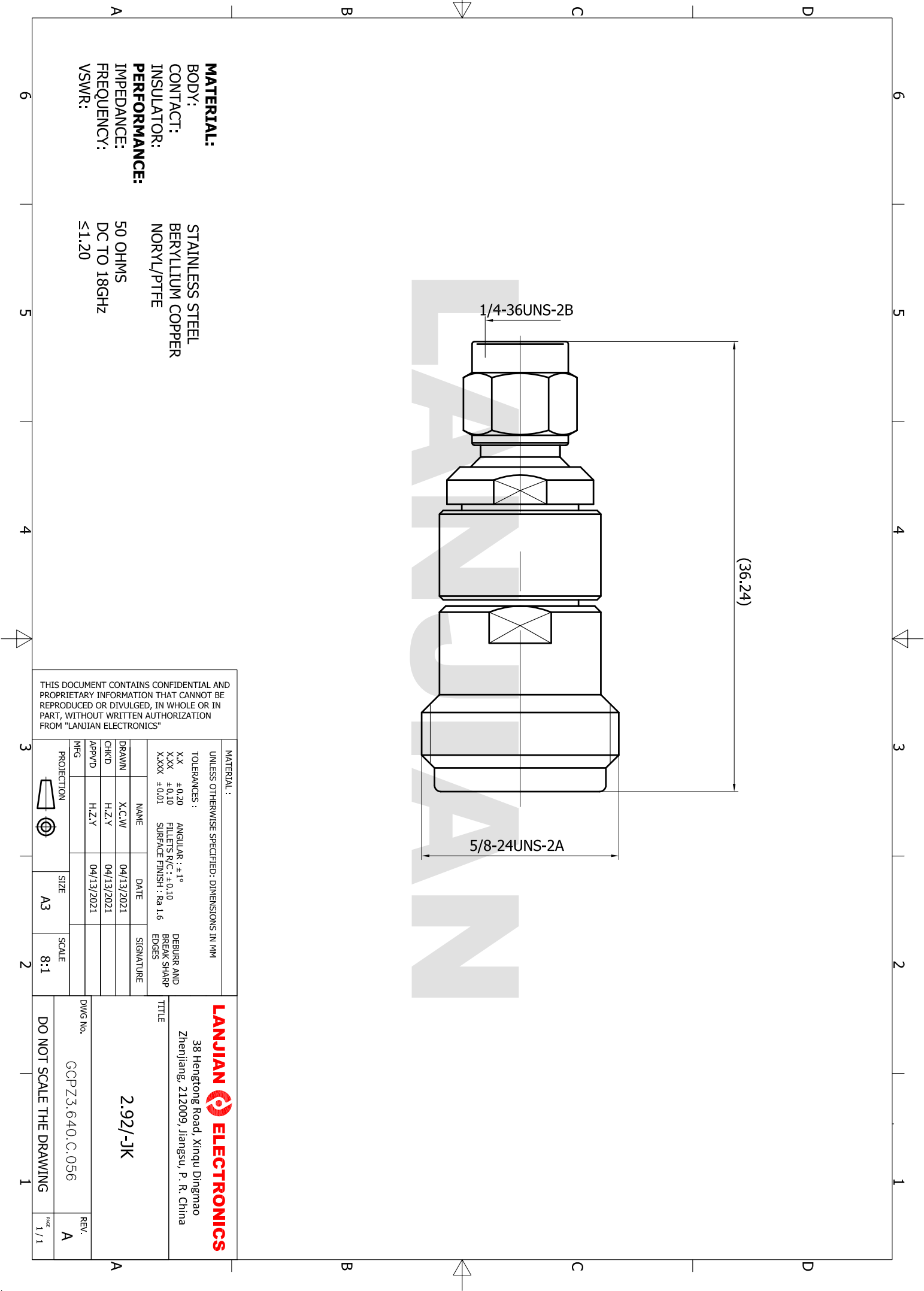
MATERIAL :		UNLESS OTHERWISE SPECIFIED: DIMENSIONS IN MM	
TOLERANCES :		ANGULAR : ±1°	
XX	±0.20	FILETS R/C :	±0.10
XXX	±0.10	SURFACE FINISH :	Ra 1.6
X.XXX	±0.01	DEBURR AND BREAK SHARP EDGES	
DRAWN	X.C.W	DATE	SIGNATURE
CHKD	H.Z.Y	04/13/2021	
APPRVD	H.Z.Y	04/13/2021	
MFG			
PROJECTION	SIZE	SCALE	
	A3	8:1	

LANJIAN ELECTRONICS
 38 Hengtong Road, Xinqu Dingmao
 Zhenjiang, 212009, Jiangsu, P. R. China

TITLE
2.92/-JK

DWG No. GCPZ3.640.C.056

DO NOT SCALE THE DRAWING



REV.
 A

1 / 1